



chemflo[®]



**TYPE ALP
MEDIUM DUTY SLURRY PUMP**

ALP FEATURES

③ SHAFT SLEEVE

A hardened, heavy duty corrosion resistant sleeve with 'O' Ring seals at both ends protects the shaft.

② VOLUTE LINERS

Replaceable liners are available in both hard metals and pressure moulded elastomers and are fully interchangeable within the same pump.

① IMPELLER

The impeller may be either moulded elastomer or hard metal. Deep side sealing vanes relieve seal pressure and minimise re-circulation.

④ SEALING FLEXIBILITY

Choice of packed box or centrifugal sealing or mechanical seal.

⑤ SHAFT

A large diameter shaft with a short overhang minimises deflection and vibration.

⑥ BEARING

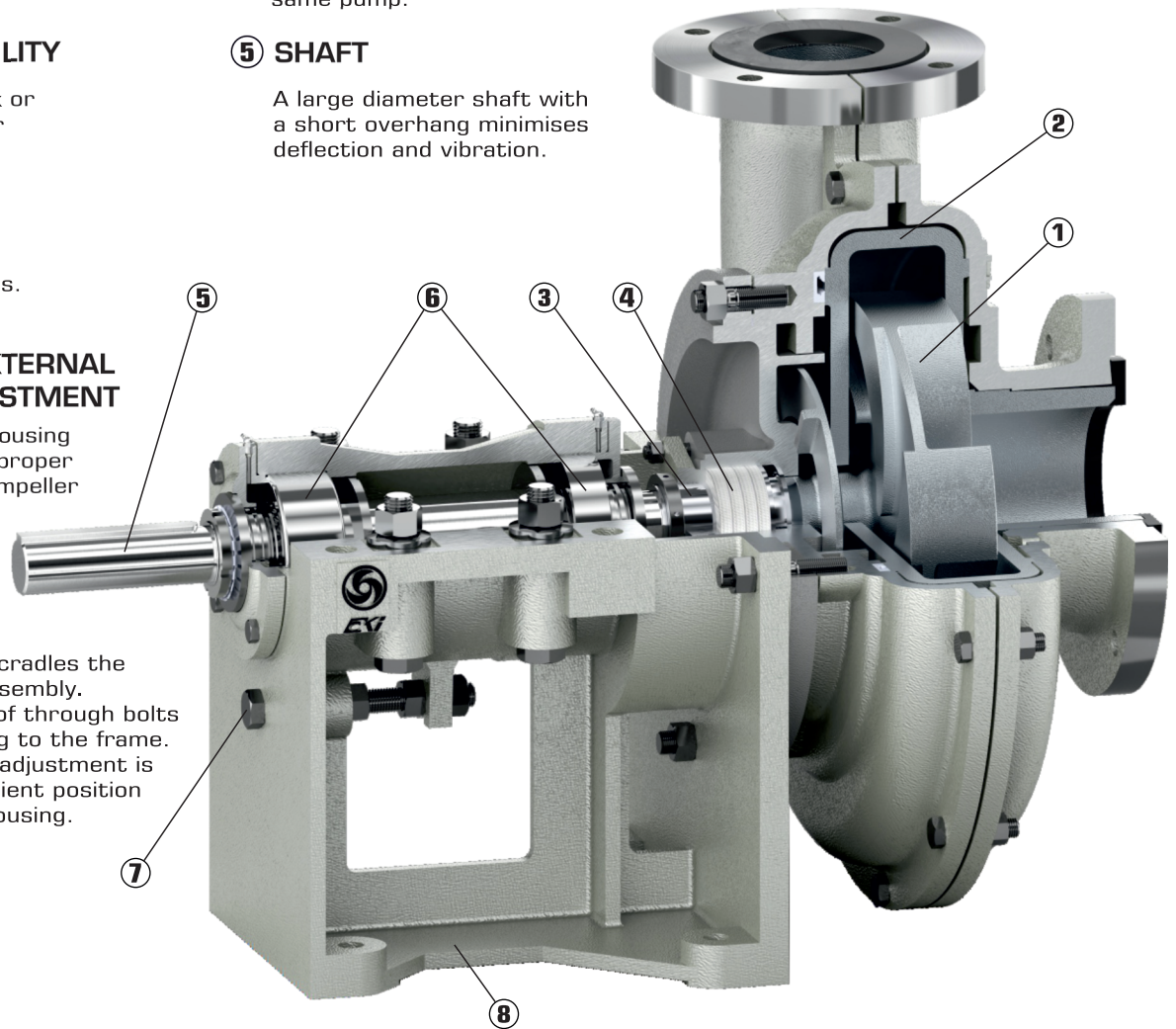
Heavy duty bearings for tough applications.

⑦ SIMPLE-FAST EXTERNAL IMPELLER ADJUSTMENT

Adjustable bearing housing assembly maintains proper clearance between impeller and casing.

⑧ PUMP BASE

A one piece casting cradles the cartridge bearing assembly. A minimum number of through bolts hold the pump casing to the frame. A means of impeller adjustment is provided in a convenient position below the bearing housing.



ALP PUMP WITH RUBBER CONSTRUCTION

- Replaceable rubberliners are interchangeable with hard metal liners.
- Impellers & Throat bush in rubber moulded with reinforcement.



"BETTER... BY DESIGN!"



chemflo®

ALP

RANGE

- Capacity to 750 m³/h
- Head to 60 m
- Temperature 120°C
- Pressure 1000 kPa
- Specific gravity < 1.15
- Maximum Solid size 10mm
- Percentage of solid by weight 5 to 20.

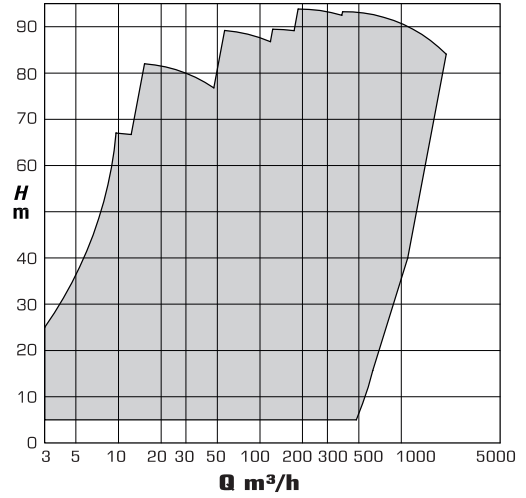
Design Features

- Construction: One power end for both Metal liner & Rubber liner pump.
- Wear life: Extra thickness provided to enhance wear life at appropriate places.
- External impeller adjustment for maintaining original efficiency.
- Sealing Flexibility: Gland packing, Expeller sealing & Mechanical seal.

Services

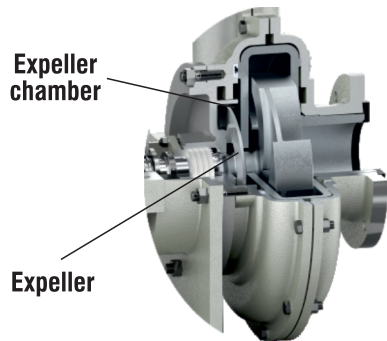
- Power Utility: Ash slurry, Lime slurry.
- Non Metallic Mining: Clay slurries, Phosphate slurries, Soda ash & Potash.
- Wet process cement: Clay wash, Clay storage kiln feed, Raw grind feed, Screenings.
- Pulp & Paper: Black liquor, Sand slurries, Mill waste sludge, Scrubber water, Fly ash.

HYDRAULIC COVERAGE



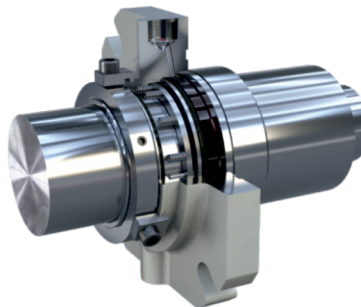
EXPELLER SEALING

The purpose of Expeller sealing is to eliminate leakage through gland when the pump is running.

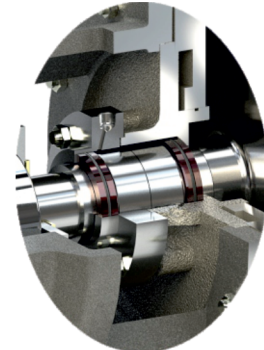


CHEMFLO MECHANICAL SEAL

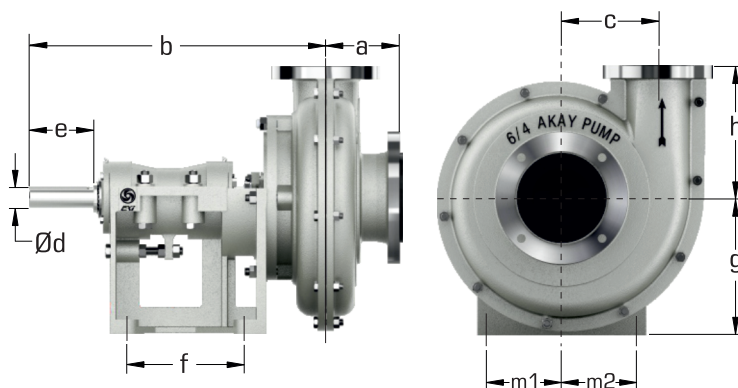
Chemflo Type Cr100 B1 seal is best suited for slurry due to isolation of spring from pumping media.



Chemflo Double back to back Type 58/58 is an ideal seal for pumping slurry with API Plan 54.



ALP DIMENSIONS



MODELS	a	b	c	Ød	e	f	g	h	m1	m2
2/1.5	115	500	110.5	28	83	208	180	172	87.5	87.5
3/2	145	610	132	38	121.5	236	254	210	118	118
4/3	162	610	169	38	121.5	236	254	262	118	118
6/4	190	765	247	48	165	305	350	338	185	185
8/6	227	890	346	65	219	334	460	460	235	235

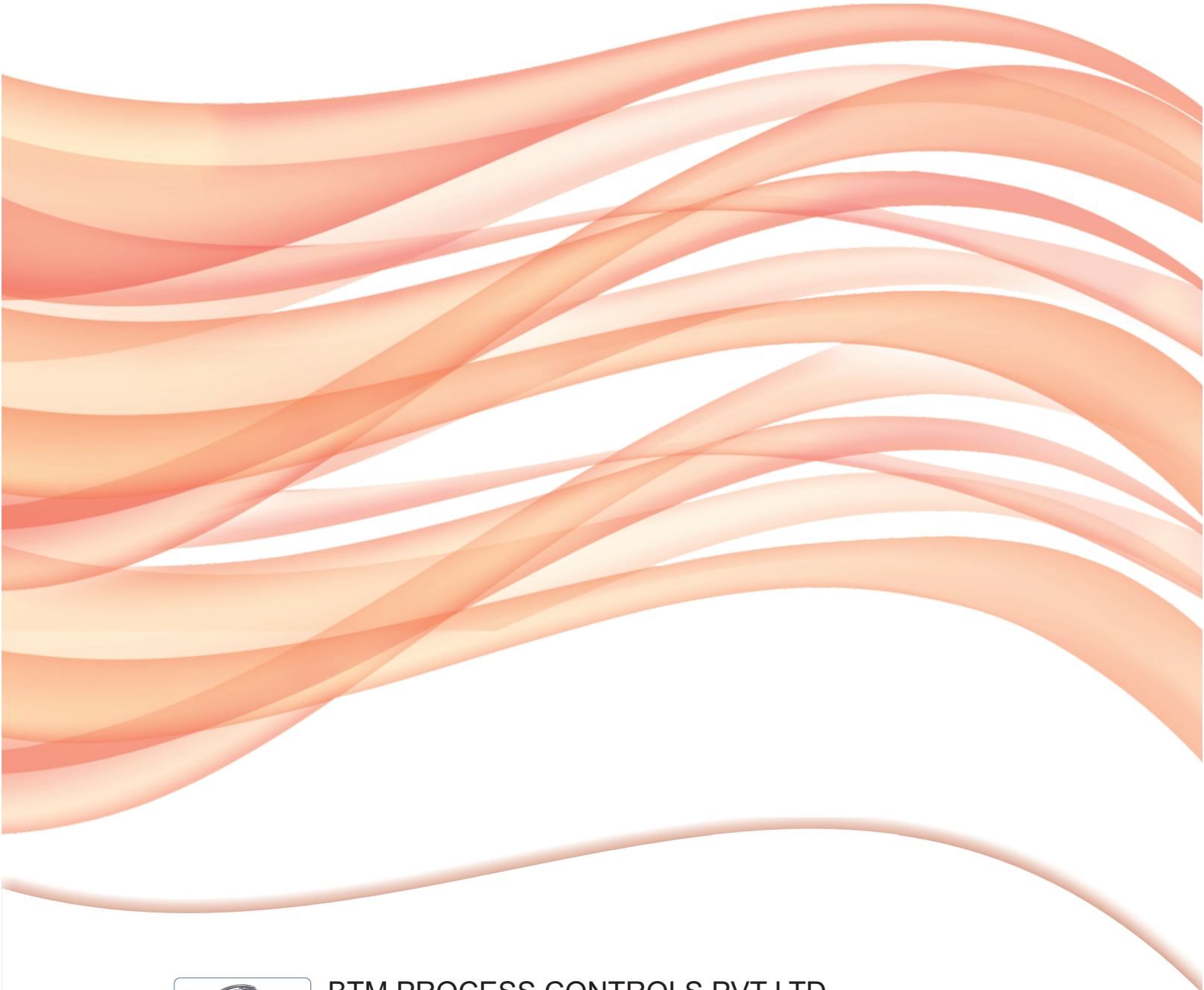
"BETTER... BY DESIGN!"



chemflo®

BTM is an associate company of Akay Industries Pvt Ltd

chemflo[®]



BTM PROCESS CONTROLS PVT LTD.

Address: Plot No 162/A&162/B Gamanagatti Industrial Estate
Hubballi Karnataka 580024

Tel: +91 xxx xxxxxxx, Email: business@btmprocesscontrols.com

Web: www.btmprocesscontrols.com

